

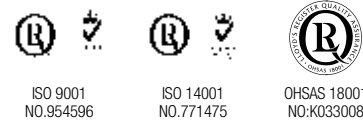
SPECIFICATIONS

MODEL		K9 2400 (EEC Homologated)	
ENGINE			
Model		3C100LWU-D2	
Type		3 Cylinder In-line Vertical, Water Cooled 4 Cycle Diesel Engine	
Engine Gross(Max)	HP	24	
Rated Revolution(per minute)	RPM	3000	
Fuel Tank	L	37	
Oil Tank	L	15	
DRIVE TRAIN			
Type		Belt CVT	
Max Speed	km/h	40	
Brake		Front/rear Hyd. Dry Caliper Disc	
Steering Type		Hydraulic Power Steering	
Suspension		Independent with Coil Over Shock(Dual A-Arm)	
Shock Load Adjustment(F/R)		Cam Adjustment (4 Gear)	
TIRES & WHEELS			
Work Site	F	25 x 10 - 12	
	R	25 x 10 - 12	
Turf	F	25 x 10 - 12	
	R	25 x 10 - 12	
ATV(Mud)	F	25 x 10 - 12	
	R	25 x 10 - 12	
DIMENSION			
Length	mm	3,045	
Width	mm	1,590	
Height	mm	1,970	
Wheelbase	mm	2,180	
Ground Clearance	mm	304	
Curb Weight	kg	930	
CARGO BED			
Length x Width x Depth	kg	1,110 x 1,480 x 293	
Payload capacity		725	
Deck Capacity	kg	500	
NOISE & VIBRATION			
Noise Level	dB[A]	83.5	
Vibration(Steering Wheel / Pedal / Seat)	m/s ²	0.9	
ETC			
Seat Feature		1 Suspension Bucket Seat (Driver) / 2 Bench Seat (Passenger)	
Hood Color		Red / Green	
Speedmeter		Digital Cluster	
Steering Wheel		Tilting	
USB and Power Socket		Standard	

*The specifications are subject to change without notice.



Daedong Kioti Europe B.V.
Koerilenstraat 2-6, 3199 LR, Maasvlakte
Rotterdam The Netherlands
Tel. 31-181-353024 Web. www.kioti.eu



ISO 9001
NO.954596

ISO 14001
NO.771475

OHSAS 18001
NO.K033008

OPTIONAL EQUIPMENT

Wheel

- Aluminum Wheel (Factory Opt.)
- Only available with Worksite / ATV(Mud) tyre

Half Door

- Half Door (1 Set: 2 Doors)

Lamp

- Front Working Lamp
- Fog Lamp
- Front Arch Mud Guard
- Beacon Kit

Canopy / Windshield

- Windshield (with Wiper)
- Sun Canopy

Hitch

- Winch Bracket

Hydraulics

- Hydraulic Dumping Kit
- Remote Hydraulic Kit
- Hand Throttle Kit

Safety

- Suspension Dust Guard
- Skid Plate
- Backup Alarm System
- Rear Screen

Deck

- Urethane Coating (Factory Opt.)

ETC

- Floor Mat
- Headrest
- Hood Storage
- Seatback Cover



K9 2400

24 HP



KIOTI Tractor / Daedong Ind. Co., Ltd. / 03.18

Dealer Imprint Area

LIT-UD200-ALL

K9 2400

THE ULTIMATE UTILITY VEHICLE

Engine Power 24HP

Max Speed 40km/h

Brake Performance Up

CVT Improvement

New Design Hood & Ergonomic Design

Noise & Vibration Reduction

Double Wishbone Shock Absorber

Tilting Steering & Digital Cluster



*All product images are for illustrative purposes only and may differ from the actual product.



Max Speed 40km/h [EEC Homologation]

The more powerful engine and efficient transmission offer the maximum traveling speed up to 40km/h (EEC regulated speed limit). The K9 series will give a delightful working and driving experience.



Brake Performance Increased

Excellent braking performance is achieved thanks to long lasting front and rear hydraulic disc brakes with a mechanical parking brake. Safety has been enhanced by 30% compared to the previous model.



CVT Improvement

The K9 series starts smoothly and responds quickly with two speed ranges (Hi/L0) and 4WD function.

Engine Power 24HP

The new eco-friendly diesel engine provides powerful performance and improves fuel efficiency while reducing noise levels.



NEW EXPERIENCE K9 2400 DYNAMIC & RIGID WORKHORSE



Seat Space

The contoured bench seats which are the widest in their class, in combination with a separate bucket seat for the driver give enough room for three people. It fulfills the safety condition of ANSI, SAE and EEC with reinforced ROPS.



Digital Dashboard

The digital dashboard centrally located to the driver provides improved visibility at any time of the day or night. The operator can check the functions such as a tachometer, hour meter, RPM and Gear range.



Easy Adjustment of Steering Wheel

The adjustment of the steering wheel is simplified with a push lever allowing easy adjustment to suit the operator's needs.



Ergonomic Design

The combination of driver-centric controllers and ergonomic interior design gives a more comfortable, agile and in-command driver experience.



Ergonomic Lever and Switch

Conveniently located car-type operating controls make it easy for anyone to operate and increase the joy of driving.



Power & USB Sockets

Standard USB port and 12 volt electric socket give good choices to power extra electrical devices.

NEW GENERATION KIOTI VALUE UTILITY VEHICLE



Double Wishbone Shock Absorber

Suspension equipped with front and rear wishbone double A arms absorbs the shocks on the road and makes driving more comfortable. It also prevents the K9 leaning to one side and wearing tyres.

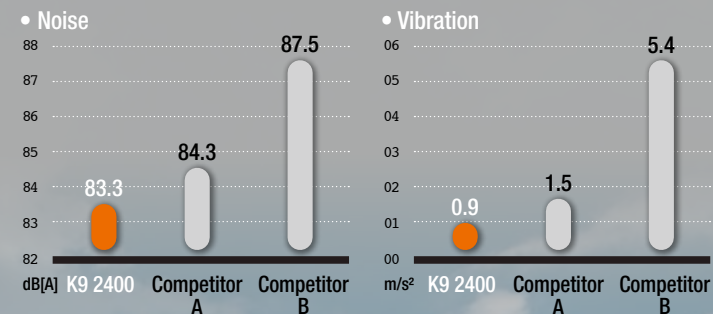


New Design Hood

K9 2400 has a dynamic look with rigid body to make your job and ride more enjoyable.

Noise and Vibration Reduction

The noise and vibration of new K9 have been reduced by using CAE simulation.



Cargo Bed & Hydraulic Dumping Kit (Optional)

Wide cargo bed and 500kg load capacity provide excellent payload capacity. Optional urethane coating for the cargo bed is available for maximum corrosion resistance. With an optional hydraulic dumping kit, it is built for hard work in all conditions.



Tailgate

Single piece tailgate folds out to 90 degrees and helps for easy loading and unloading.



Windshield Kit with Wiper (Optional)

Upper positioned wiper fully complies with new homologation and gives good visibility. Openable front windshield makes for a refreshing driving condition with excellent ventilation.



Bonnet Storage Kit, Floor Mat (Optional)

Bonnet storage kit increases the storage room and gives enhanced convenience. Rubber floor mat gives a more comfortable driving and working experience and also protects from the dust and dirt.



Front Working Lamp (Optional)

LED lamps improve the visibility in any weather conditions day or night.



Side Mirror (EEC Homologated)

Side mirrors are folding inward and outward to prevent potential damage in the narrower spaces and reduce the shock after collision with objects during driving.